



GASOLINE/DIESEL WATER PUMP

INTELLIGENT FLOW FOR GOOD



LEO GROUP PUMP CO., LTD.
LEO GROUP PUMP (ZHEJIANG) CO., LTD.

📍 No.1, 3rd Street, East Industry Center, Wenling, Zhejiang, 317511, P.R.China
🌐 www.leopump.com ✉ export@leopump.com
☎ +86-576-8998 6360 📠 +86-576-8998 9898



Website



Facebook



YouTube

LEO reserves all the right of products modification without prior notification

2023 V2.0

www.leopump.com

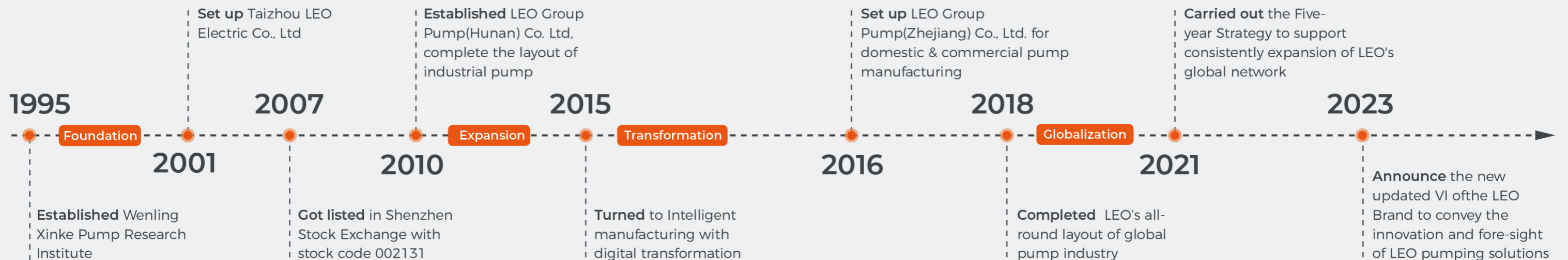


Intelligent Flow For Good

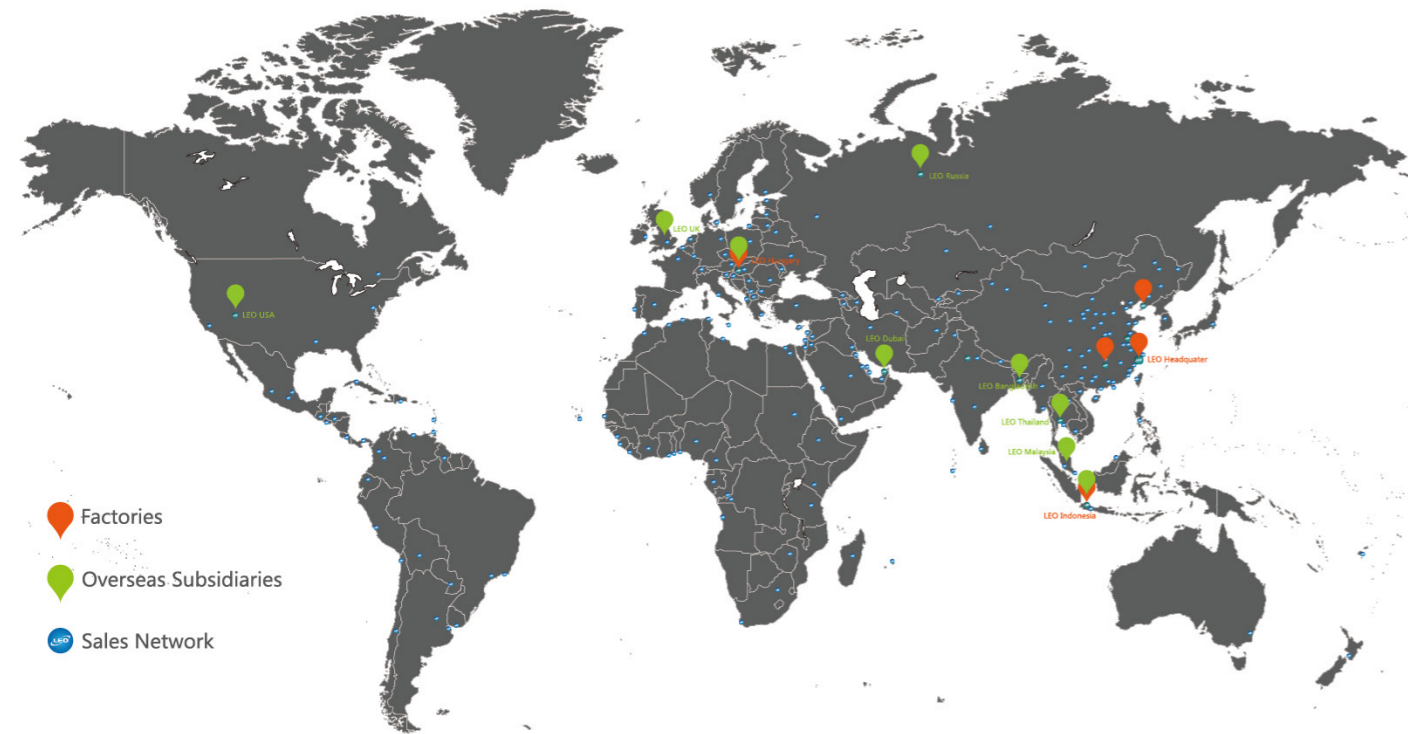
LEO PUMP, founded in 1995, is a leading professional pump & system solution provider, engaged in R&D, manufacture, sales and service of all series pumps and systems. Our products are widely used in water conservancy & water resources, power plants, petrochemical industry, mining & metallurgical industry, civilian water applications, garden machinery and solar pump& system.

With more than 28 years' profession and experience, LEO has become one of the world's famous pump brands. We have set up many production and sales subsidiaries in key regional markets, such as Dubai, Indonesia, Thailand, Malaysia, Bangladesh, USA, Hungary and Russia. Our innovations have brought changes to more than 150 countries and regions, served over 500 million end-users.

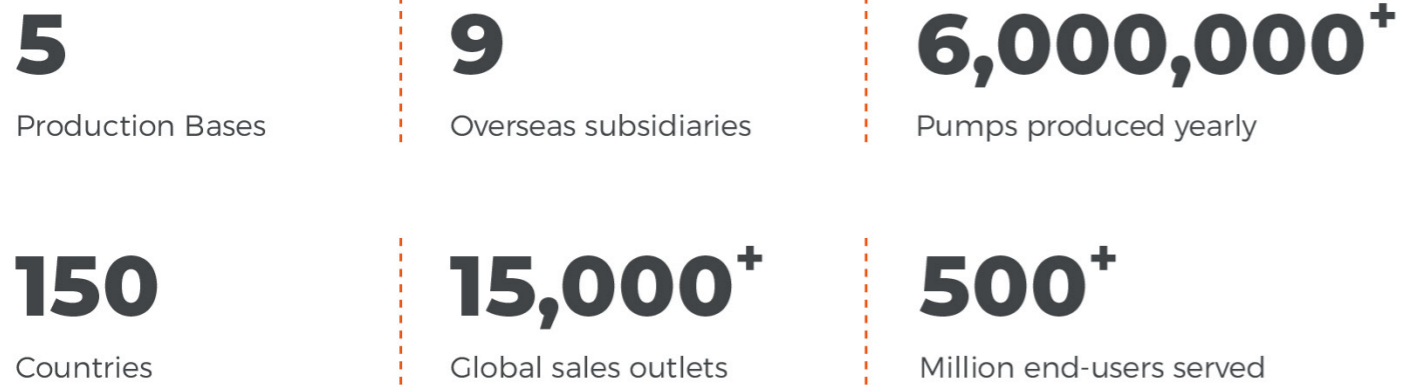
We keep adhering to philosophy of "run business with virtue, pursue success with perfection, win victory with efficiency, and go forward with right actions" and focus on developing safe and high-efficiency pump and system, being a sustainable development industry leader. Going forward we will continue our consistent creativity and development ability in each pump for human's health!



LEO WORLD



LEO IN NUMBERS



Globally we have 5 production plants and relevant professional sales and technical teams with over 500 technicians to support global sales and service. Besides, we also set up several sales and production subsidiaries in key regional markets in Asia, Europe, and America with global employees over 6,000.

With the devoting experience and extraordinary comprehensive strength, LEO has obtained over 700 patents and become a leading pioneer among pump manufacturers and we will keep focus on the development of safe and high-efficient pump&system, being a sustainable enterprise in the industry!



Pump Manufacturing Base for Domestic and Commercial Applications



Pump Manufacturing Base for General Industrial Pumps



Pump Manufacturing Base for Petrochemical Industry



Application

- To transfer clean water with liquid temperature between 0°C and 40°C
- Applicable in water supply and drainage for factories, mines, municipal facilities as well as field irrigation, etc.

Features

- New unique design with ergonomic feature
- Portable and compact pump frame
- High quality engine with excellent performance and long service life
- Impeller designed with high efficient hydraulic system
- Low fuel consumption

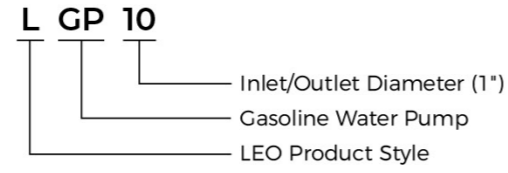
Pump

- Anti-rust cast iron impeller and diffuser
- Max.Suction: 8 m . Suck 5 m needs 120 s
- Inlet/outlet: 25 mm / 38 mm

Engine

- Single cylinder, 2-stroke, Air-cooled
- Max.power: 1.6 HP
- Rated speed: 7500rpm
- Mixture ratio of fuel: 1:25 (2-stroke engine oil and 90 octane gasoline or higher)

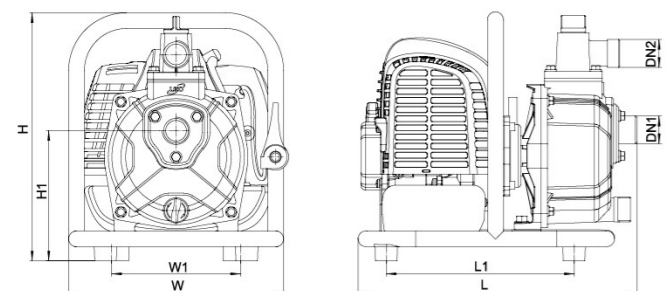
Identification Codes



Technical Data

Model	Power HP	Mixed Fuel Tank L	Displacement cc	Engine	Q(m³/h)									
					0	2	4	6	8	10	12	14	15	
LGP10	1.6	1	42.7	G43	0	33.3	66.7	100	133.3	166.7	200	233.3	250	
LGP15	1.6	1	42.7	G43	0	33.3	66.7	100	133.3	166.7	200	233.3	250	

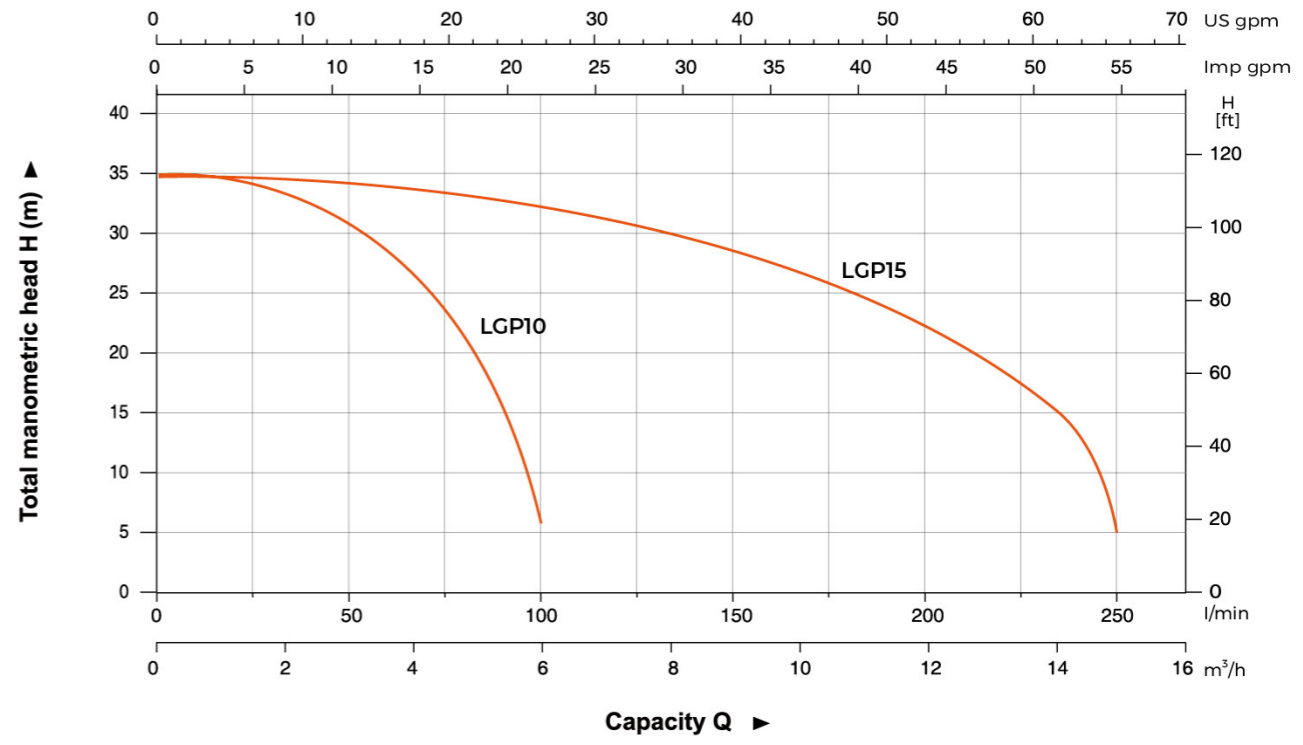
Model	Power HP	Mixed Fuel Tank L	Displacement cc	Engine	H (m)	Q(l/min)									
						0	33.3	66.7	100	133.3	166.7	200	233.3	250	
LGP10	1.6	1	42.7	G43	35	32.5	26.9	6	-	-	-	-	-		
LGP15	1.6	1	42.7	G43	35	34.5	34	33	30	27.5	23.5	15	5		



Dimension

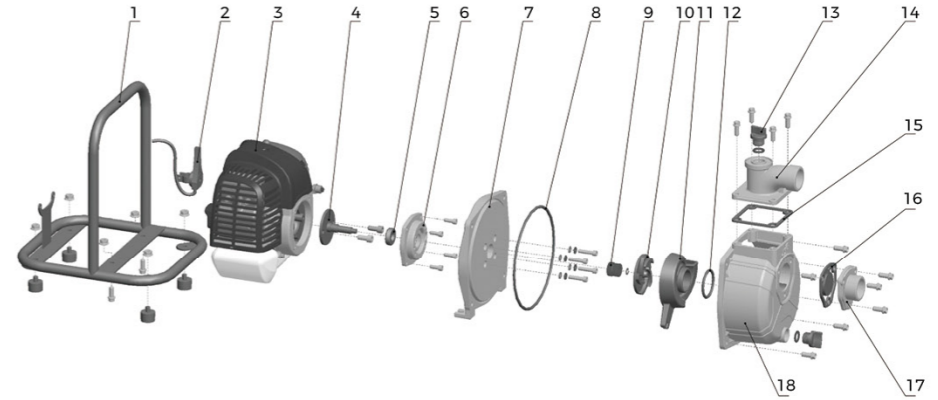
Model	DN1	DN2	L (mm)	W (mm)	H (mm)	L1 (mm)	W1 (mm)	H1 (mm)
LGP10	1"	1"	336	279	300	217.5	155	157
LGP15	1 1/2"	1 1/2"	344	279	345	233	175	180

Hydraulic Performance Curves



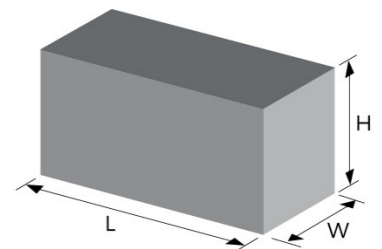
Materials Table

No.	Part	Material
1	Frame	Steel
2	Throttle trigger	
3	Engine	
4	Crankshaft	
5	Bearing	
6	Seat connection	Aluminum
7	Pump cover	Aluminum
8	O-ring	NBR
9	Mechanical seal	Carbon/Ceramic
10	Impeller	HT200
11	Diffuser	HT200
12	O-ring	NBR
13	Plug	PP
14	Outlet	Aluminum
15	Seal	NBR
16	Non-return valve	NBR
17	Inlet	Aluminum
18	Pump body	Aluminum



Package Information

Model	GW (Kgs)	L (mm)	W (mm)	H (mm)	Quantity (PCS/20'TEU)
LGP10	6.84	350	290	325	702
LGP15	8.27	355	290	370	681





Application

- To transfer clean water with liquid temperature between 0°C and 40°C
- Application in water supply and drainage for factories, mines, municipal facilities as well as field irrigation, etc.

Features

- 4-stroke gasoline engine power performance, structural optimization and upgrading
- Ignition more convenient, more complete combustion, low energy consumption, more environmentally friendly
- Strengthened pump body ensures more durable and reliable service
- Better sealing effect by using special mechanical seal
- Impeller designed with high efficient hydraulic system

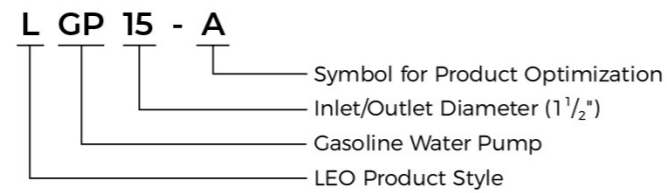
Pump

- Anti-rust cast iron impeller and diffuser
- Max.Suction: 8 m . Suck 5 m needs 120 s
- Inlet/outlet: 25 mm / 38 mm

Engine

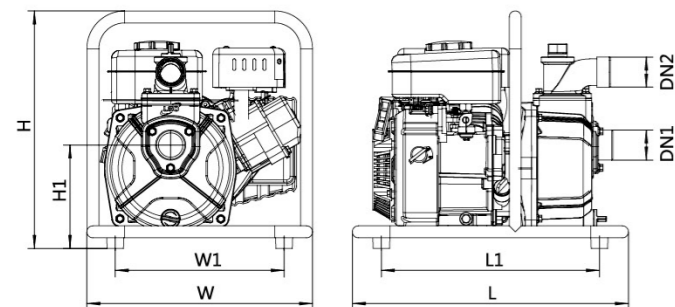
- Single cylinder, 4-stroke, Air-cooled
- Max.power: 3 HP
- Rated speed: 3600 rpm

Identification Codes



Technical Data

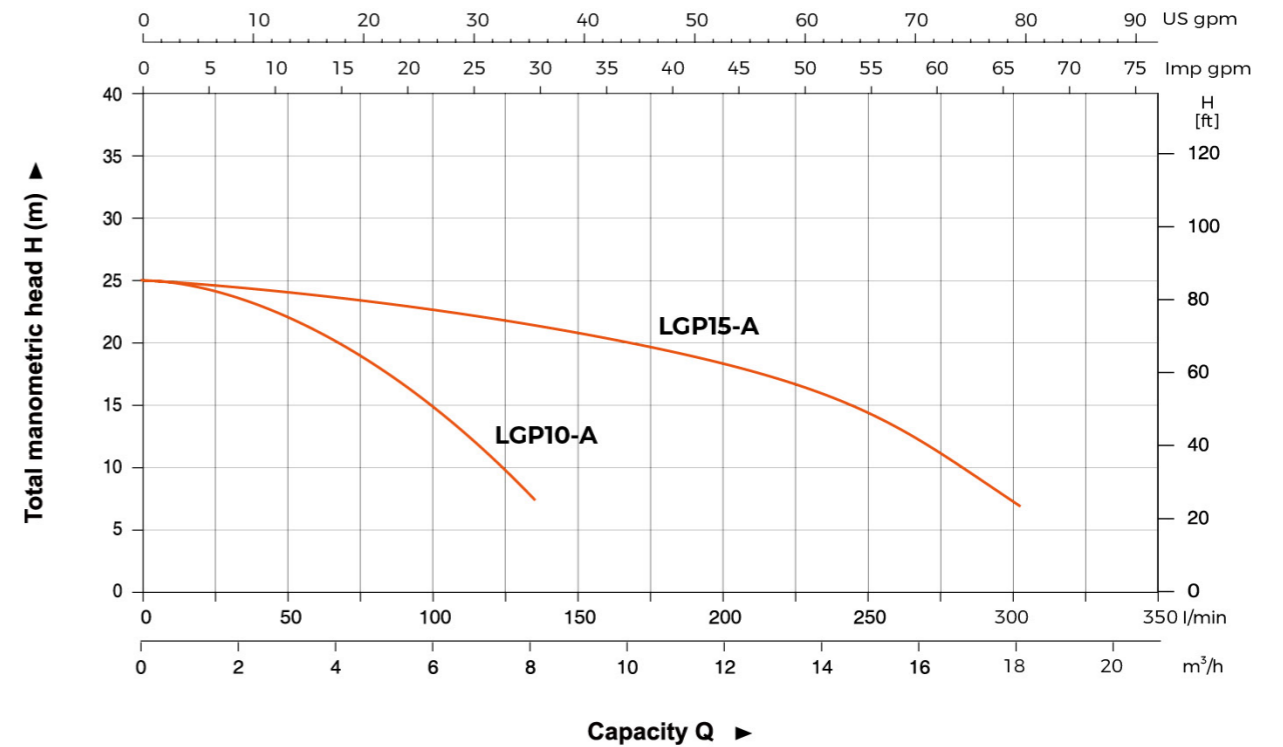
Model	Power HP	Fuel Tank L	Engine Oil L	Displacement cc	Engine	Q(m³/h)		Q(l/min)									
						0	2	4	6	8	10	12	14	16	18		
LGP10-A	3	1.8	0.35	79	G79	H	25	24	20.2	15	7.5	-	-	-	-	-	-
LGP15-A	3	1.8	0.35	79	G79	(m)	25	24.5	24	23	22	20	17	15	12	7.2	



Dimension

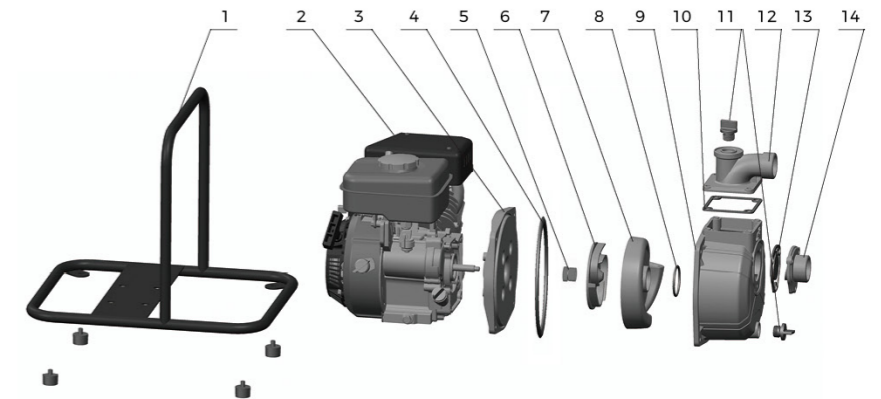
Model	DN1	DN2	L (mm)	W (mm)	H (mm)	L1 (mm)	W1 (mm)	H1 (mm)
LGP10-A	1"	1"	438	380	377	346	268	158
LGP15-A	1 1/2"	1 1/2"	438	380	377	346	268	164.2

Hydraulic Performance Curves



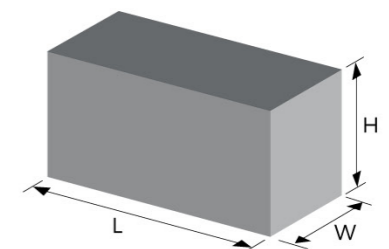
Materials Table

No.	Part	Material
1	Frame	Steel
2	Engine	
3	Pump cover	Aluminum
4	O-ring	NBR
5	Mechanical seal	Carbon/Ceramic
6	Impeller	HT200
7	Diffuser	HT200
8	O-ring	NBR
9	Pump body	Aluminum
10	Seal	NBR
11	Plug	PP
12	Outlet	Aluminum
13	Non-return valve	NBR
14	Inlet	Aluminum



Package Information

Model	GW (Kgs)	L (mm)	W (mm)	H (mm)	Quantity (PCS/20'TEU)
LGP10-A	13	464	378	400	330
LGP15-A	14.5	464	378	400	330





Application

- To transfer clean water with liquid temperature between 0°C and 40°C
- Application in water supply and drainage for factories, mines, municipal facilities as well as field irrigation, etc.

Features

- Strengthened pump body ensures more durable and reliable service
- Better sealing effect by using special mechanical seal
- Multiple direction outlet for convenient use
- Improved starter handle for easier starting
- 20% increased loading quantity thanks to new frame structure
- Less gasoline consumption
- Powerful, durable LEO engine

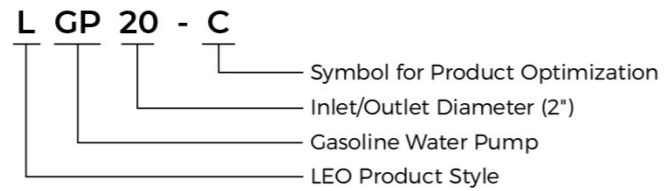
Pump

- Anti-rust cast iron impeller and diffuser
- High quality forged steel crankshaft
- Max.Suction: 8 m . Suck 5 m needs 120 s
- Inlet/outlet: 50 mm / 80 mm

Engine

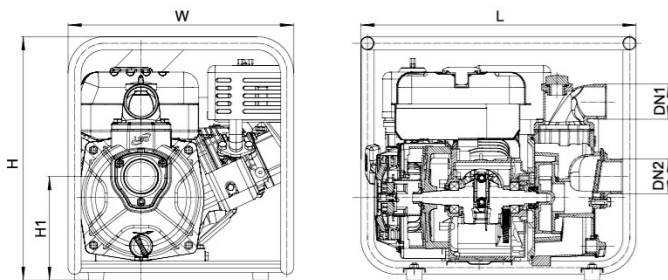
- Single cylinder, 4-stroke, Air-cooled
- Max.power: 6.5 HP
- Rated speed: 3600 rpm
- Reliable engine equipped with low engine oil shut off system

Identification Codes



Technical Data

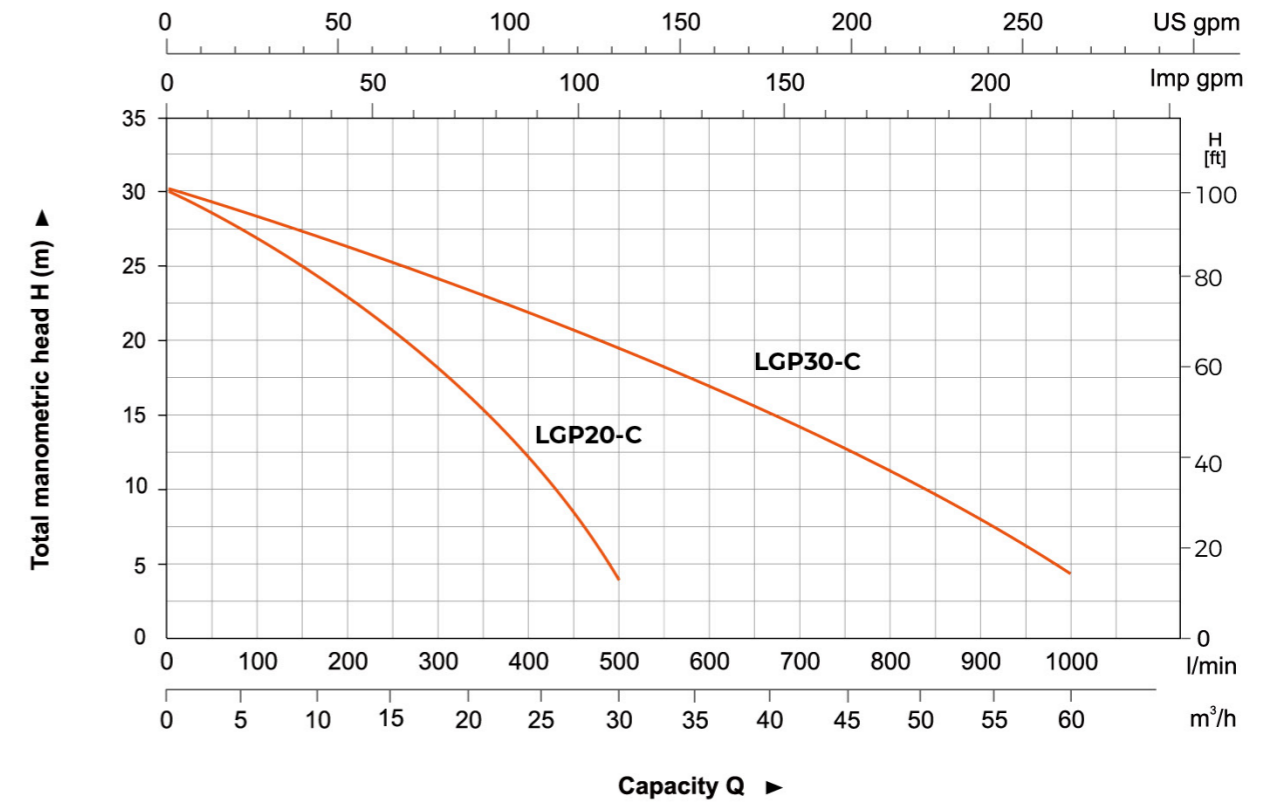
Model	Power HP	Fuel Tank L	Engine Oil L	Displacement cc	Engine	Q(m³/h)																		
						0	5	10	15	20	25	30	35	40	45	50	55	60						
LGP20-C	6.5	2.8	0.55	196	G200	H						30	28	24.5	21	16	10.5	3.5	-	-	-	-	-	-
LGP30-C	6.5	2.8	0.55	196	G200	H						30	29	27.5	26	24	21.7	19.5	16.9	14.4	11.6	9.2	6.4	3.5



Dimension

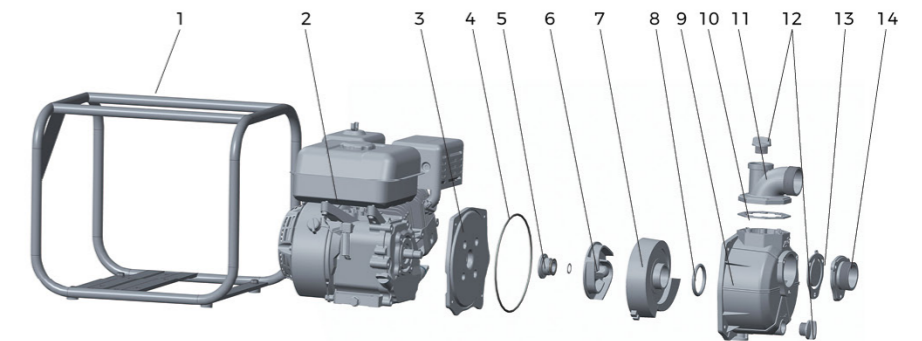
Model	DN1	DN2	L (mm)	W (mm)	H (mm)	H1 (mm)
LGP20-C	2"	2"	460	375	403.5	181
LGP30-C	3"	3"	500	375	425.5	189

Hydraulic Performance Curves



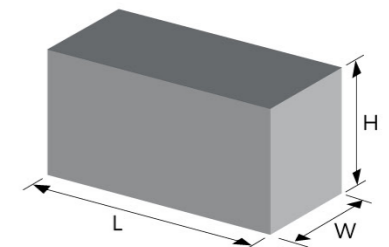
Materials Table

No.	Part	Material
1	Frame	Steel
2	Gasoline engine	
3	Pump cover	ADC12
4	O-ring	NBR
5	Mechanical seal	Carbon/Ceramic
6	Impeller	Cast iron
7	Diffuser	Cast iron
8	O-ring	NBR
9	Pump body	Aluminum
10	Gasket	NBR
11	Outlet	Aluminum
12	Filling plug	PA6
13	Non-return valve	NBR
14	Inlet	Aluminum



Package Information

Model	GW (Kgs)	L (mm)	W (mm)	H (mm)	Quantity (PCS/20' TEU)
LGP20-C	21.5	475	390	425	365
LGP30-C	23	515	390	447	335





Application

- To transfer clean water with liquid temperature between 0°C and 40 °C
- Application in water supply and drainage for factories, mines, municipal facilities as well as field irrigation, etc.

Features

- Flexible multi-directional discharge
- Durable steel frame
- Compact for easy carrying
- Quiet and reliable engine
- Low emission and fuel consumption

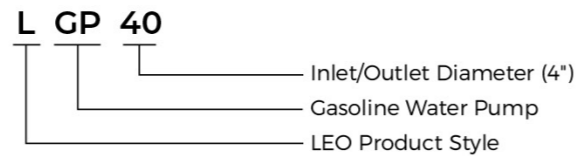
Pump

- Cast iron impeller and cast aluminum housing for long life time
- Max. suction: 8 m, suck 5 m needs 120 s
- Inlet/outlet: 100 mm

Engine

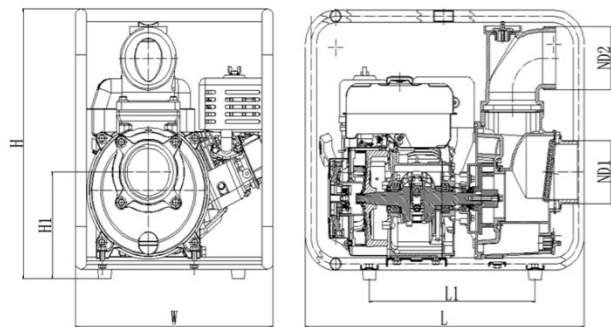
- Single cylinder, 4-stroke, Air-cooled
- Max. power: 6.5 HP
- Rated speed: 3600 rpm
- Reliable engine equipped with low engine oil shut off system

Identification Codes



Technical Data

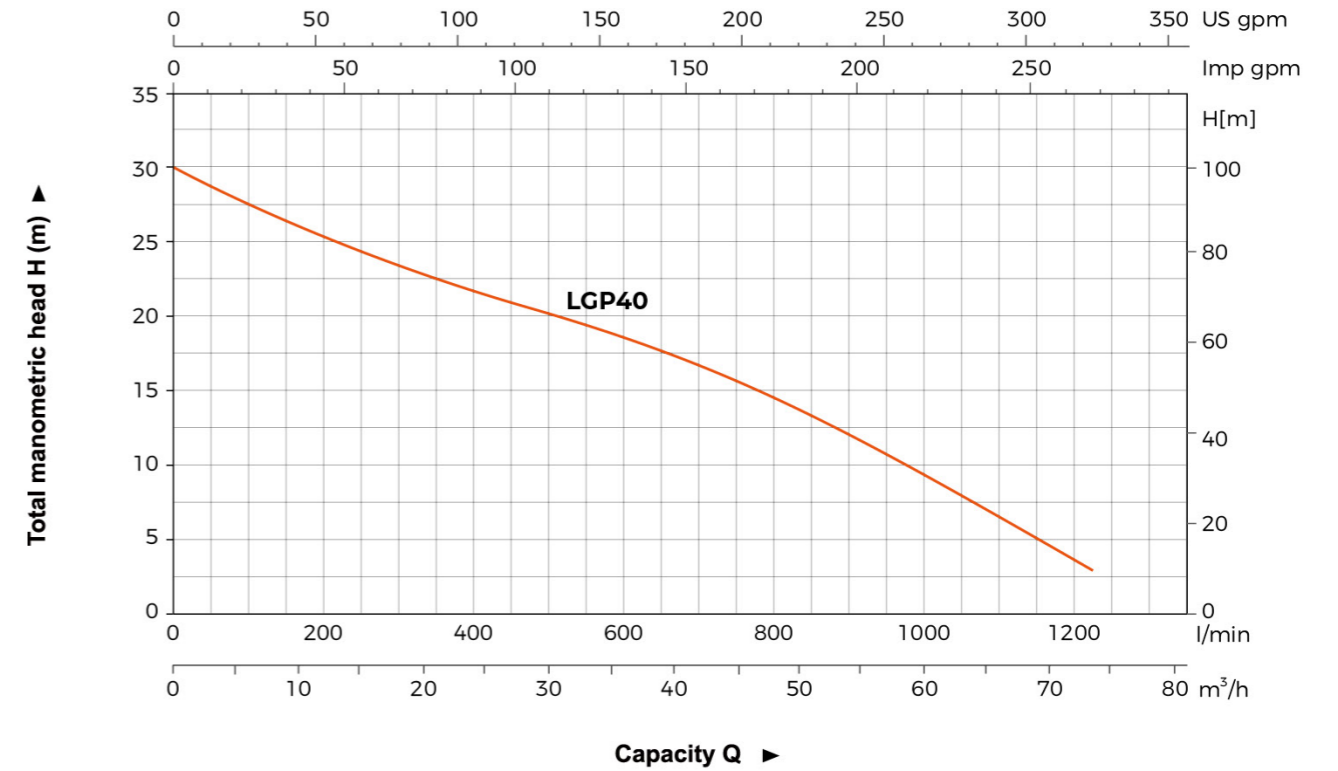
Model	Power	Fuel Tank	Engine Oil	Displacement	Engine	Q(m ³ /h)	0	10	20	30	40	50	60	70
	HP	L	L	cc		Q(l/min)	0	166.7	333.3	500	666.7	833.3	1000	1200
LGP40	6.5	3.1	0.55	196	G200	H(m)	30	26	22.6	20.1	17.1	13.3	9	3.1



Dimension

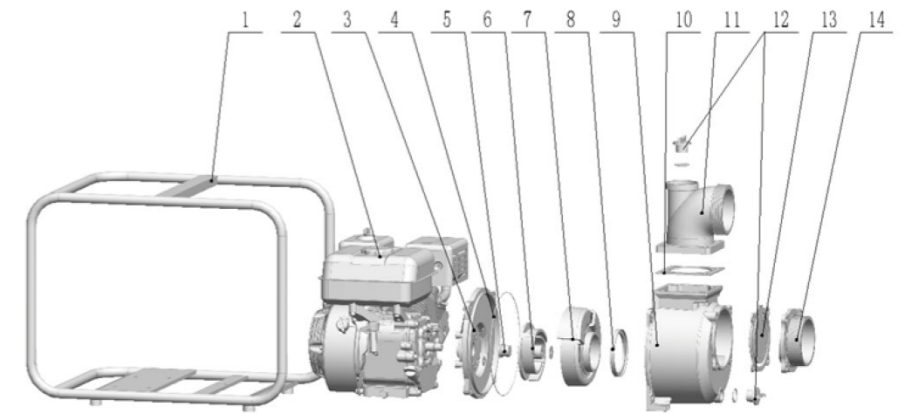
Model	DN1	DN2	L (mm)	W (mm)	H (mm)	H1 (mm)	L1 (mm)
LGP40	4"	4"	555	393	479	190	330

Hydraulic Performance Curves



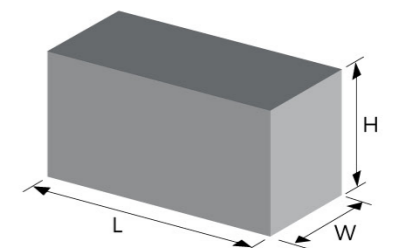
Materials Table

No.	Part	Material
1	Frame	Steel
2	Gasoline engine	
3	Pump cover	ADC12
4	O-ring	NBR
5	Mechanical seal	Carbon/Ceramic
6	Impeller	Cast iron
7	Diffuser	Cast iron
8	O-ring	NBR
9	Pump body	Aluminum
10	Gasket	NBR
11	Outlet	Aluminum
12	Filling plug	PA6
13	Non-return valve	NBR
14	Inlet	Aluminum



Package Information

Model	GW (Kgs)	L (mm)	W (mm)	H (mm)	Quantity (PCS/20' TEU)
LGP40	24.3	570	400	490	232





Application

- To transfer clean water with liquid temperature between 0°C and 40°C
- Application in water supply and drainage for factories, mines, municipal facilities as well as field irrigation, etc.
- Suitable for longer distance and greater height water transfer

Features

- New unique design with ergonomic feature
- Portable and compact pump frame
- High quality motor with excellent performance and long service life
- Impeller designed with high efficient hydraulic system
- Low fuel consumption
- LEO engine as default, BS/Honda engine is optional

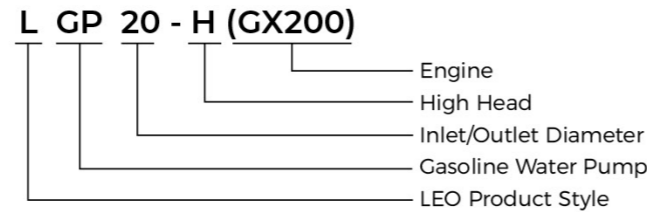
Pump

- Anti-rust cast iron diffuser
- Max.Suction: 8 m , Suck 5 m needs 120 s
- Inlet/outlet: 50 mm/2 x 38 mm+1 x 50 mm
38 mm/1 x 38 mm+2 x 25 mm

Engine

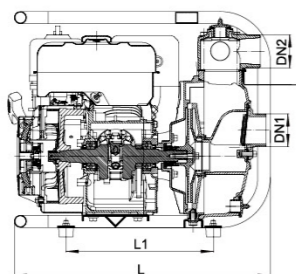
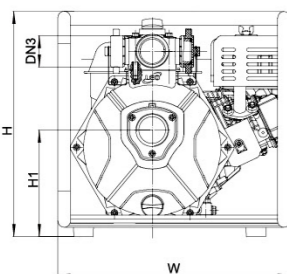
- Single cylinder, 4-stroke, Air-cooled
- Max.power: 6.5 HP
- Rated speed: 3600 rpm
- Reliable engine equipped with low engine oil shut off system

Identification Codes



Technical Data

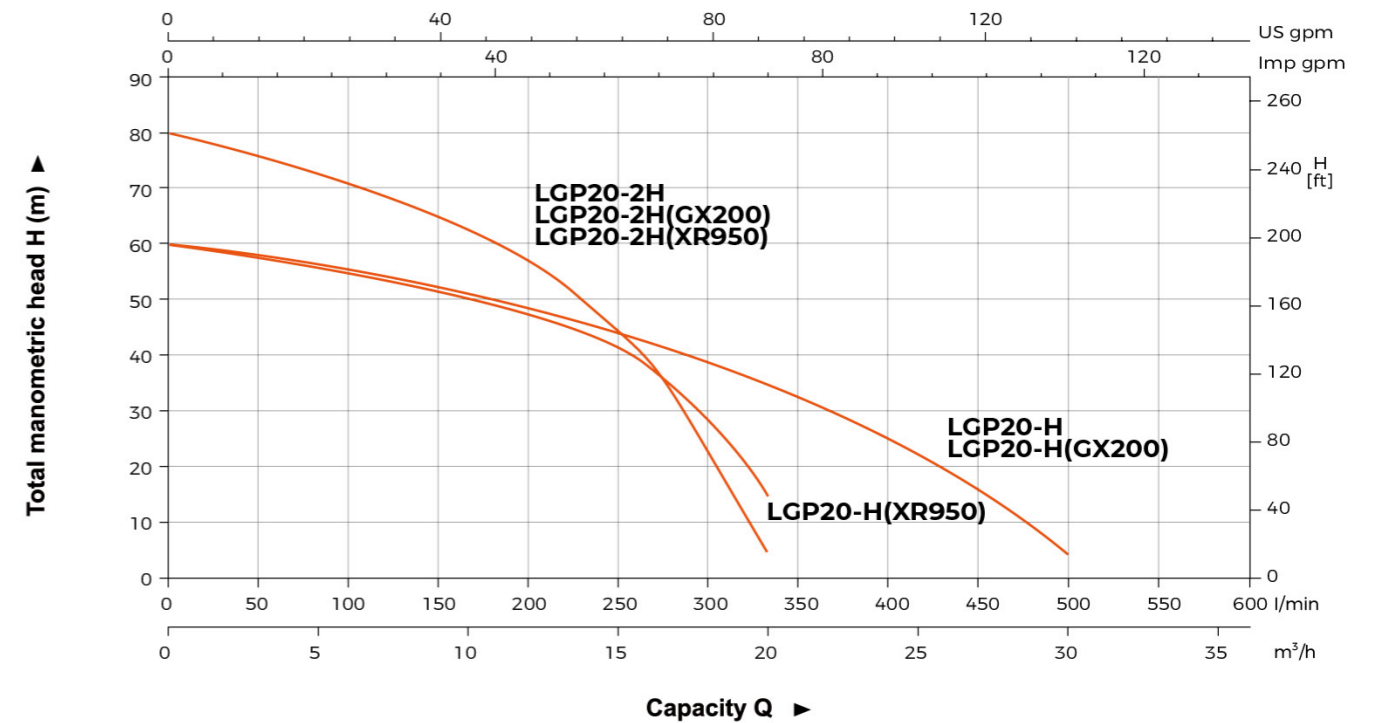
Model	Power	Fuel Tank	Engine Oil	Displacement	Engine	Q(m ³ /h)							
	HP	L	L	cc		0	5	10	15	20	25	30	
LGP20-H	6.5	3.1	0.55	196	G200	H (m)	60	56.5	51.5	44.5	35	20	5
LGP20-H(GX200)	6.5	2.8	0.58	196	GX200		60	56.5	51.5	44.5	35	20	5
LGP20-2H	6.5	3.1	0.55	196	G200		80	72.5	62.5	45	5	-	-
LGP20-2H(GX200)	6.5	2.8	0.58	196	GX200		80	72.5	62.5	45	5	-	-
LGP20-H(XR950)	6.5	3.1	0.6	208	XR950		60	55.2	50	41	15	-	-
LGP20-2H(XR950)	6.5	3.1	0.6	208	XR950		80	72.5	62.5	45	5	-	-



Dimension

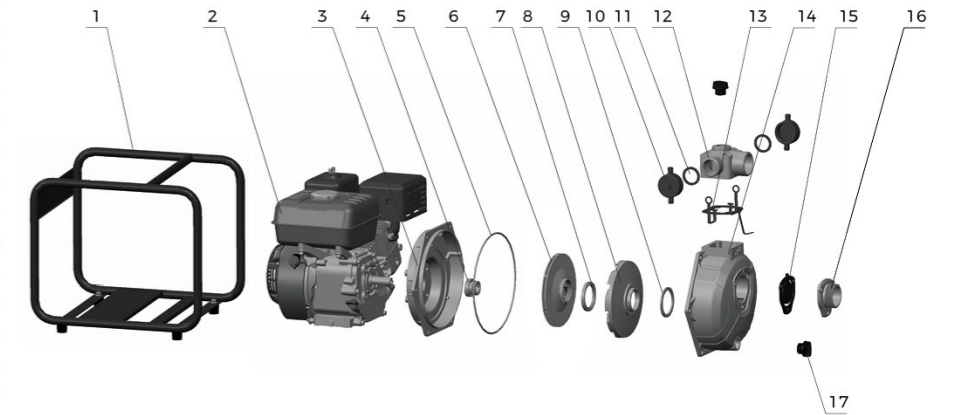
Model	DN1	DN2	2xDN3	L (mm)	W (mm)	H (mm)	H1 (mm)
LGP20-H	2"	2"	1.5"	463	398	406	200
LGP20-H(GX200)	2"	2"	1.5"	530	420	425	192.2
LGP20-2H	2"	2"	1.5"	463	398	406	200
LGP20-2H(GX200)	2"	2"	1.5"	530	420	425	192.2
LGP20-H(XR950)	2"	2"	1.5"	530	420	425	190
LGP20-2H(XR950)	2"	2"	1.5"	530	420	425	190

Hydraulic Performance Curves



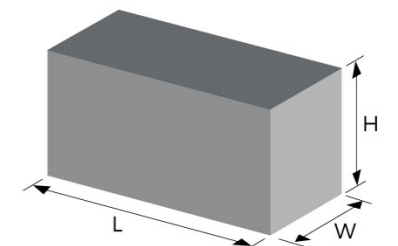
Materials Table

No.	Part	Material
1	Frame	Steel
2	Engine	
3	Bracket	Aluminum
4	Mechanical seal	Carbon/Ceramic
5	O-ring	NBR
6	Impeller	Aluminum
7	Seal ring	NBR
8	Diffuser	HT200
9	Seal ring	NBR
10	Pipe blanking cap	PP
11	Seal ring	NBR
12	Outlet	Aluminum
13	Gasket	NBR
14	Pump body	Aluminum
15	Non-return valve	NBR
16	Inlet	Aluminum
17	Filling plug	PA6



Package Information

Model	GW (Kgs)	L (mm)	W (mm)	H (mm)	Quantity (PCS/20' TEU)
LGP20-H	23.22	470	412	432	305
LGP20-H(GX200)	25.5	545	435	465	196
LGP20-2H	23.24	470	412	432	305
LGP20-2H(GX200)	27	545	435	465	196
LGP20-H(XR950)	27.2	545	435	465	196
LGP20-2H(XR950)	28.2	545	435	465	196





Application

- To transfer clean water with liquid temperature between 0°C and 40°C
- Application in water supply and drainage for factories, mines, municipal facilities as well as field irrigation, etc.

Features

- Strengthened cast-iron pump body ensures more durable and reliable service
- Impeller designed with high efficient hydraulic system
- High quality engine with excellent performance and long service life
- Better sealing effect by using special mechanical seal
- Low fuel consumption

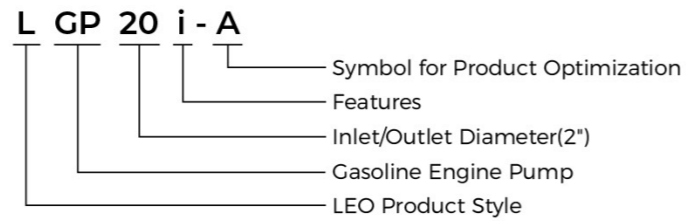
Pump

- Anti-rust cast iron pump body
- Aluminum alloy impeller
- Max.Suction: 8 m . Suck 5 m needs 120 s
- Inlet/outlet: 50 mm

Engine

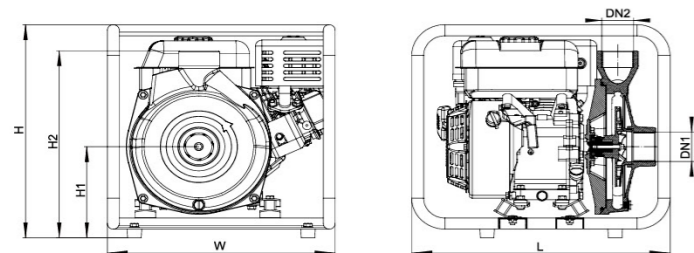
- Single cylinder, 4-stroke, Air-cooled
- Max.power: 6.5 HP
- Rated speed: 3600 rpm
- Reliable engine equipped with low engine oil shut off system

Identification Codes



Technical Data

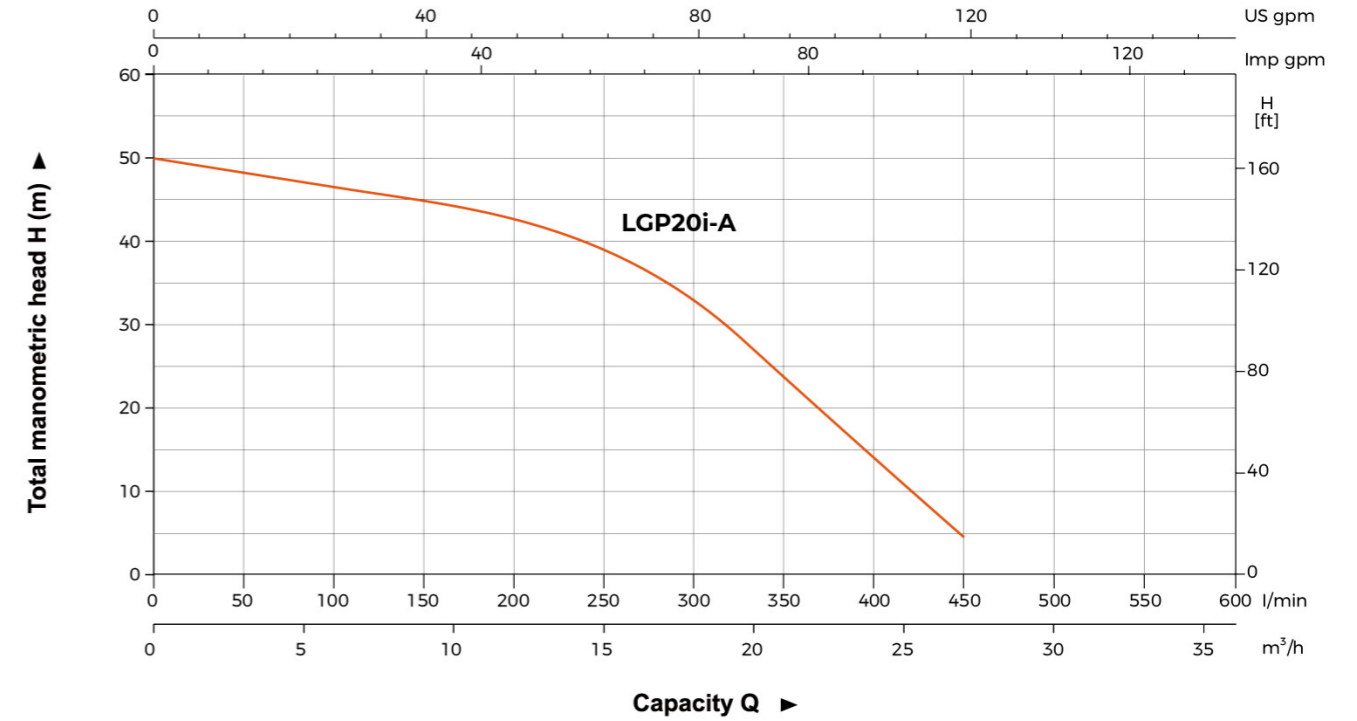
Model	Power	Fuel Tank	Engine Oil	Displacement	Engine	Q(m ³ /h)							
	HP	L	L			cc	0	5	10	15	20	25	28
LGP20i-A	6.5	3.1	0.55	196	G200	H(m)	50	48	46	40	28	11.5	5



Dimension

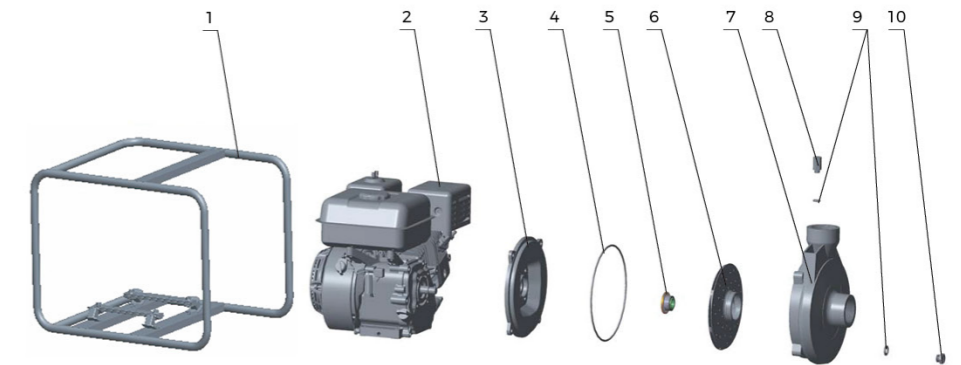
Model	DN1	DN2	L (mm)	W (mm)	H (mm)	H1 (mm)	H2 (mm)
LGP20i-A	2"	2"	476	420	440	180	370

Hydraulic Performance Curves



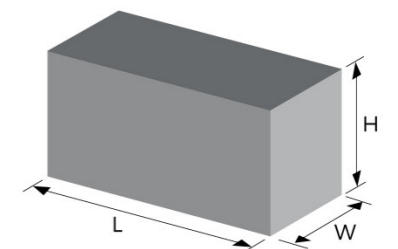
Materials Table

No.	Part	Material
1	Frame	Steel
2	Engine	
3	Pump cover	HT200
4	O-ring	NBR
5	Mechanical seal	Carbon/Ceramic
6	Impeller	Aluminum
7	Pump body	HT200
8	Plug	HPb59-1
9	O-ring	NBR
10	Plug	HPb59-1



Package Information

Model	GW (Kgs)	L (mm)	W (mm)	H (mm)	Quantity (PCS/20' TEU)
LGP20i-A	30	470	433	450	325





Application

- Can be used to transfer slurry, liquids that containing mud, sand, small rocks and other debris diameter less than 22mm.
- Sewage treatment for civil engineering, mines, quarries and municipal facilities, etc.
- Water supply and drainage for factories, mines, municipal facilities as well as field irrigation, etc.

Features

- All new design with ergonomic feature
- Reliable 4-stroke gasoline engine with low fuel consumption and high quality crankshaft
- Portable, durable and compact pump frame
- Durable sealing system with special mechanical seal
- Silicon carbide mechanical seal for increased abrasive resistance, longer life and less maintainance
- Pump body can easily disassembled and assembled for cleaning out debris, or pump repair

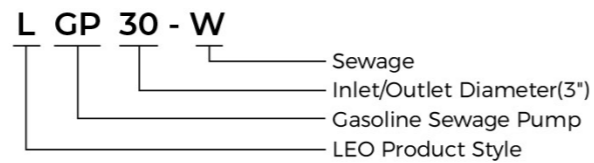
Pump

- Anti-rust cast iron impeller and diffuser
- Max.Suction: 8 m, Suck 5 m needs 120 s
- Inlet/outlet: 3"
- Max. diameter of particle: 22 mm
- Liquid temperature range: 0°C ~ 40°C

Engine

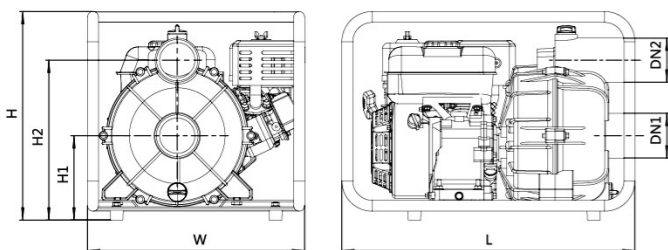
- Single cylinder, 4-stroke, Air-cooled
- Max.power: 6.5 HP
- Rated speed: 3600 rpm
- Reliable engine equipped with low engine oil shut off system

Identification Codes



Technical Data

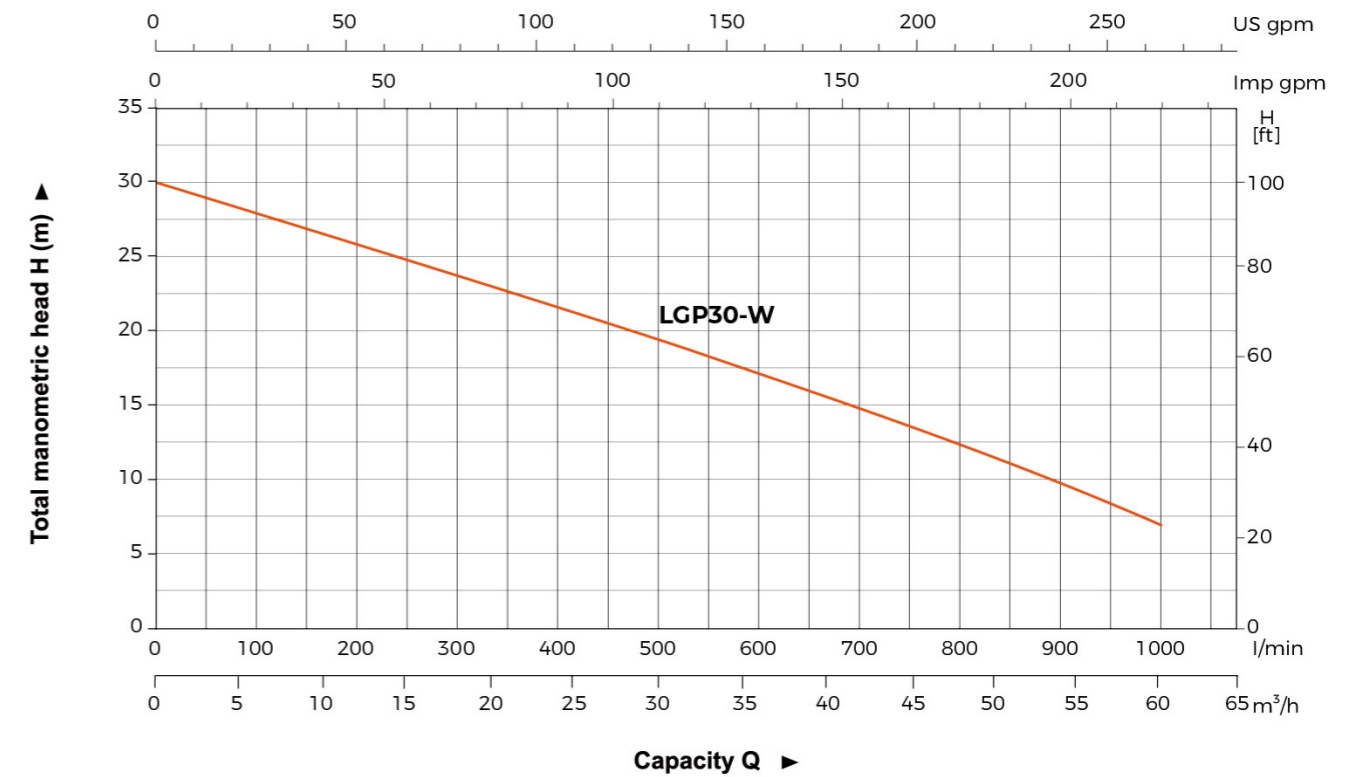
Model	Power HP	Fuel Tank L	Engine Oil L	Displacement cc	Engine	Q(m ³ /h)													
						0	5	10	15	20	25	30	35	40	45	50	55	60	
LGP30-W	6.5	3.1	0.55	196	G200	H(m)	30	27	25.5	24	22	20.5	18.5	17	15.5	14.5	11.5	9.2	7
						Q(l/min)	0	83.3	166.7	250	333.3	416.7	500	583.3	666.7	750	833.3	916.7	1000



Dimension

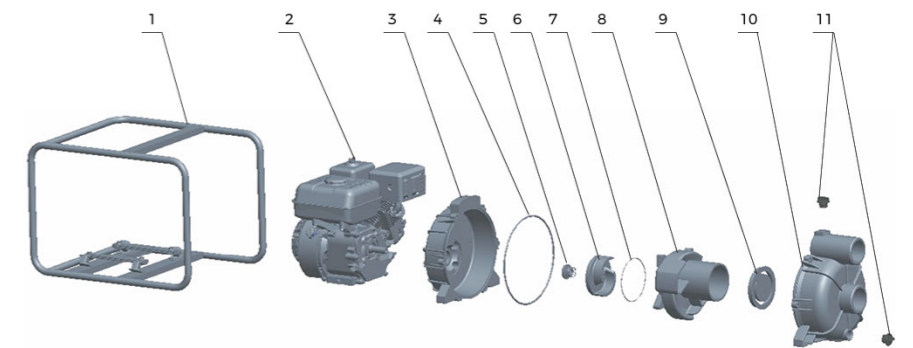
Model	DN1	DN2	L (mm)	W (mm)	H (mm)	H1 (mm)	H2 (mm)
LGP30-W	3"	3"	590	437	431	195	347

Hydraulic Performance Curves



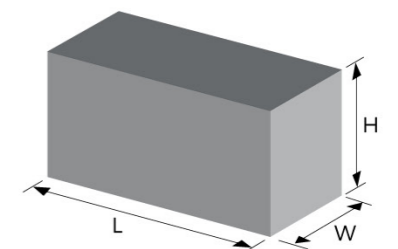
Materials Table

No.	Part	Material
1	Frame	Steel
2	Engine	
3	Pump cover	Aluminum
4	O-ring	NBR
5	Mechanical seal	Silicon carbide / Silicon carbide
6	Impeller	HT200
7	O-ring	NBR
8	Diffuser	HT200
9	Non-return valve	NBR
10	Pump body	Aluminum
11	Plug	ABS



Package Information

Model	GW (Kgs)	L (mm)	W (mm)	H (mm)	Quantity (PCS/20'TEU)
LGP30-W	34.6	605	450	459	168





Application

- To transfer clean water or trash water with liquid temperature between 0°C and 40°C
- Application in water supply and drainage for factories, mines, municipal facilities as well as field irrigation, etc.

Features

- Strengthened aluminium alloy pump body ensures more durable and reliable service
- Original design of the pump body for easy cleanout
- Impeller designed with high efficient hydraulic system
- Honda engine with excellent performance and long service life
- Better sealing effect by using special mechanical seal
- Low fuel consumption
- Honda Engine

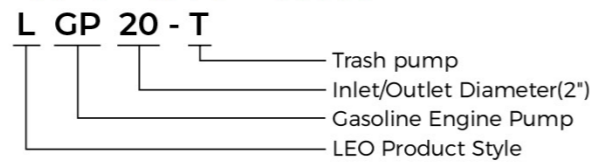
Pump

- Aluminum alloy pump body
- Anti-rust cast iron impeller
- Max. suction: 8 m
- Rated suction: 5 m / 120 s
- Inlet/outlet: 50 mm / 50 mm , 80 mm / 80 mm
- Max.diameter of particle: 22 mm
- Liquid temperature range: 0°C ~ 40°C

Engine

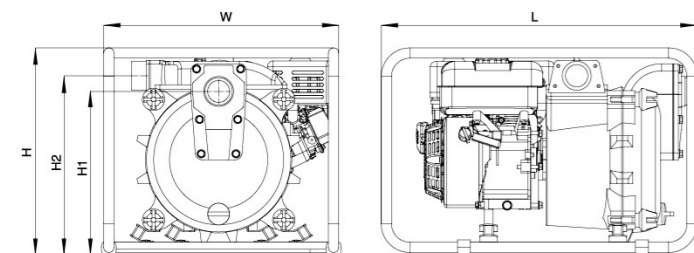
- Single cylinder,4-stroke, Air-cooled
- Max.power: 9 HP
- Displacement: 163 cc , 270 cc
- Rated speed: 3600 rpm

Identification Codes



Technical Data

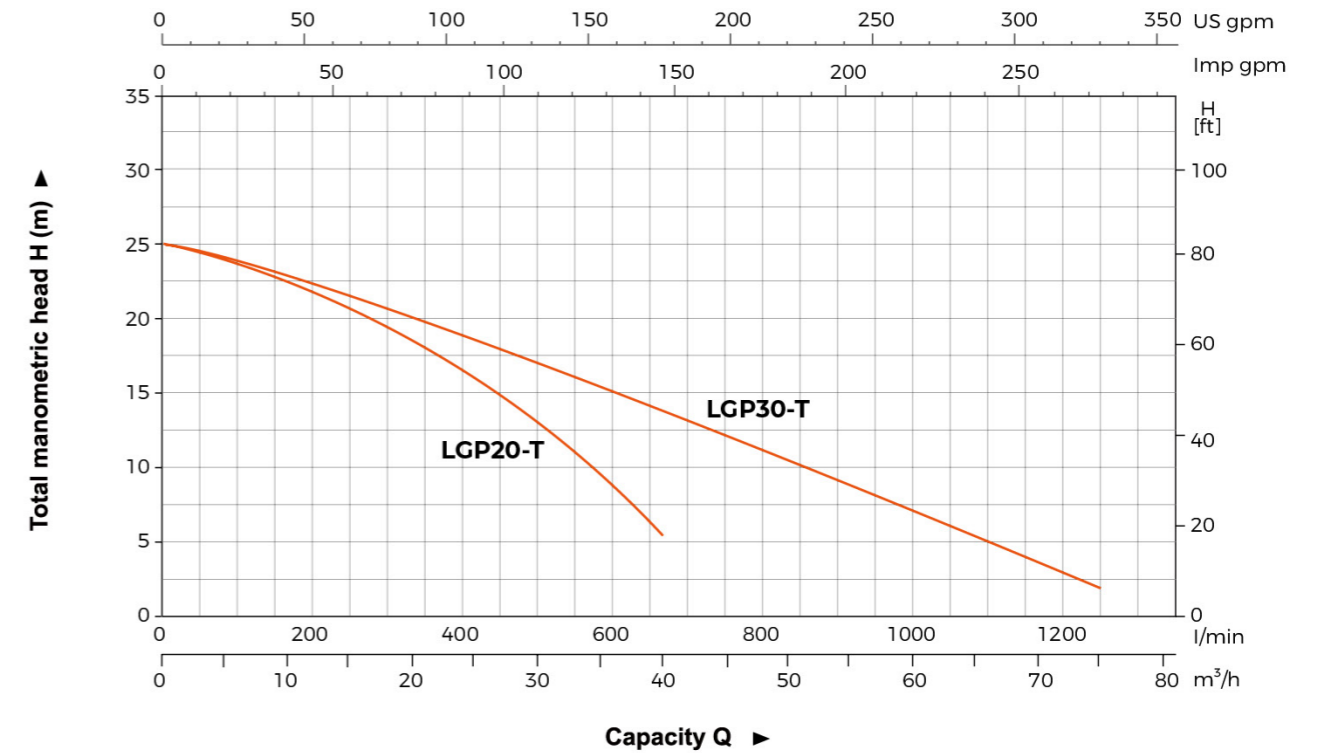
Model	Power HP	Fuel Tank L	Engine Oil L	Displacement cc	Engine	Q(m³/h)																
						0	5	10	15	20	25	30	35	40	45	55	65	75				
LGP20-T	5	2.8	0.55	163	GX160	H	25	24.1	22.5	20.6	18.6	16.1	13.5	10	6	-	-	-	-			
LGP30-T	9	3.2	1.1	270	GX270	H	25	24	23	21	19	18	16	15	14	12	9	6	2			



Dimension

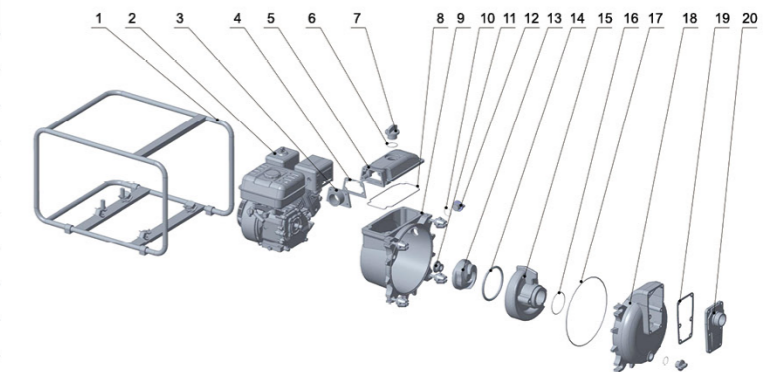
Model	DN1	DN2	L (mm)	W (mm)	H (mm)	H1 (mm)	H2 (mm)
LGP20-T	2"	2"	675	502	446	350	385
LGP30-T	3"	3"	715	502	532.5	380	415

Hydraulic Performance Curves



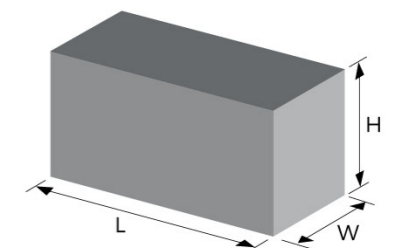
Materials Table

No.	Part	Material	No.	Part	Material
1	Frame	Steel	11	Mechanical seal	
2	Engine		12	Plug	
3	Outlet	Aluminum	13	Impeller	HT200
4	Seal	NBR	14	O-ring	NBR
5	Outlet cover	Aluminum	15	Diffuser	HT200
6	O-ring	NBR	16	O-ring	NBR
7	Plug		17	O-ring	NBR
8	O-ring	NBR	18	Pump body	Aluminum
9	Pump cover	Aluminum	19	Seal	
10	O-ring	NBR	20	Inlet	Aluminum



Package Information

Model	GW (Kgs)	L (mm)	W (mm)	H (mm)	Quantity (PCS/20'TEU)
LGP20-T	48.8	675	502	446	175
LGP30-T	63	745	542	582	128





Application

- To transfer clean water with liquid temperature between 0°C and 40°C
- Application in water supply and drainage for factories, mines, municipal facilities as well as field irrigation, etc.

Features

- All new design with ergonomic feature
- High lift series with LEO high efficient hydraulic system
- Reliable 4-stroke diesel engine with low fuel consumption and high quality crankshaft
- Portable, durable and compact pump frame
- Durable sealing system with special mechanical seal
- Optional outlet selection

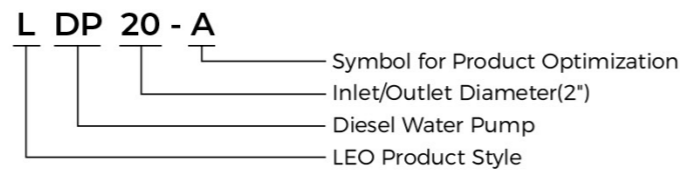
Pump

- Anti-rust cast iron impeller and diffuser
- Max.Suction: 8 m , Suck 5 m needs 120 s
- Inlet/outlet: 2"/3"

Engine

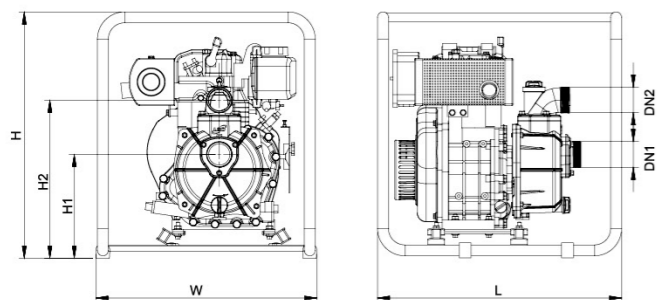
- Single cylinder,4-stroke,Air-cooled
- Max.power: 3.8 HP
- Rated speed: 3600 rpm
- Reliable engine equipped with low engine oil shut off system

Identification Codes



Technical Data

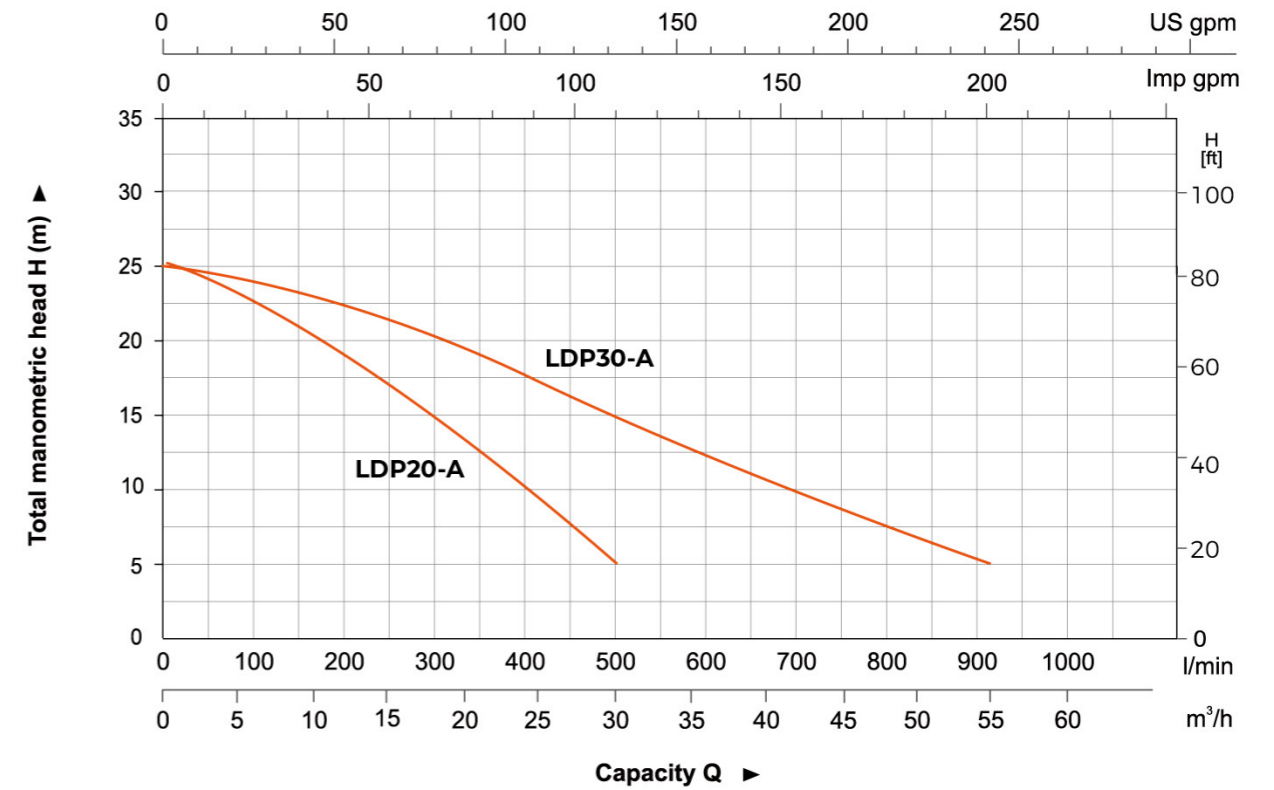
Model	Power HP	Fuel Tank L	Engine Oil L	Displacement cc	Engine	Q(m³/h)															
						0	5	10	15	20	25	30	35	40	45	50	55				
LDP20-A	3.8	2.5	0.8	219	D170	0	83.3	166.7	250	333.3	416.7	500	583.3	666.7	750	833.3	916.7				
LDP30-A	3.8	2.5	0.8	219	D170	0	83.3	166.7	250	333.3	416.7	500	583.3	666.7	750	833.3	916.7				



Dimension

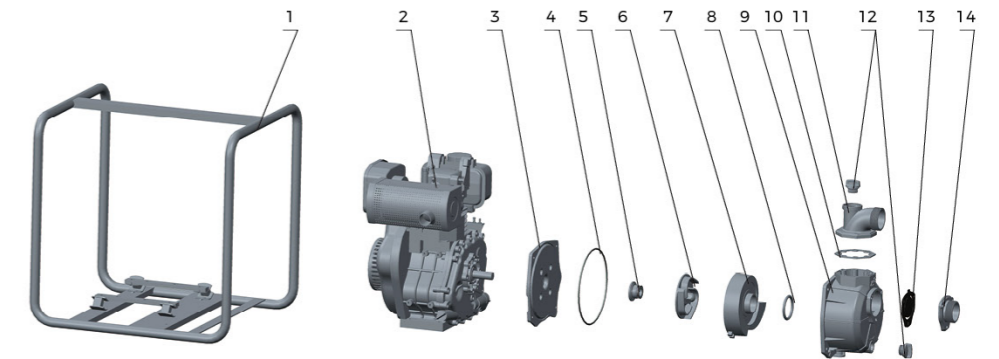
Model	DN1	DN2	L (mm)	W (mm)	H (mm)	H1 (mm)	H2 (mm)
LDP20-A	2"	2"	470	427	536	225	335
LDP30-A	3"	3"	470	427	536	240	390

Hydraulic Performance Curves



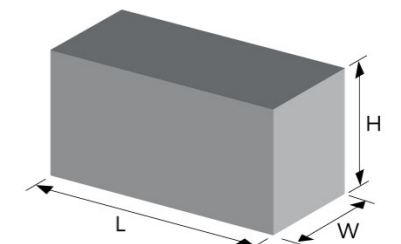
Materials Table

No.	Part	Material
1	Frame	Steel
2	Engine	
3	Pump cover	Aluminum
4	O-ring	NBR
5	Mechanical seal	Carbon/Ceramic
6	Impeller	HT200
7	Diffuser	HT200
8	O-ring	NBR
9	Pump body	Aluminum
10	Seal	NBR
11	Outlet	Aluminum
12	Plug	ABS
13	Non-return valve	NBR
14	Inlet	Aluminum



Package Information

Model	GW (Kgs)	L (mm)	W (mm)	H (mm)	Quantity (PCS/20'TEU)
LDP20-A	35.1	485	435	550	244
LDP30-A	36.2	485	435	550	244





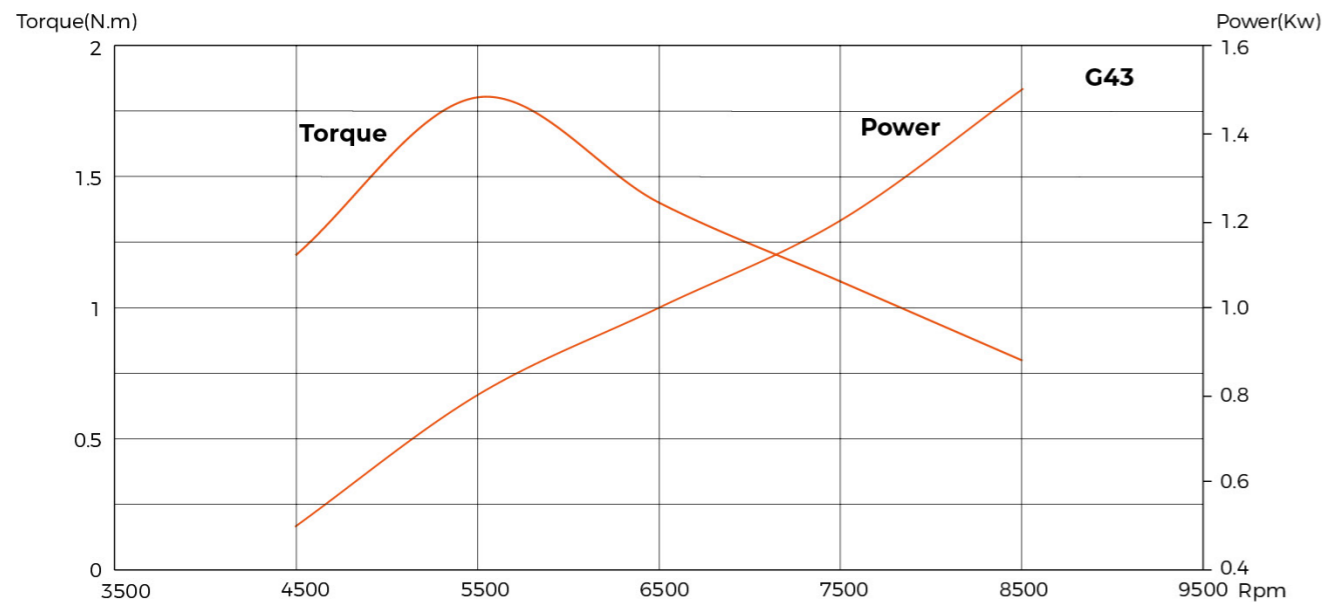
Features

- High fuel efficiency and high output operation
- Smooth performance
- Especially quiet
- Reliable
- Easy to use and maintain
- Easy starting
- Emission compliant
- Available options

Technical Data

- Model name: G43
- Engine Type: Single Cylinder,Air-cooled, 2-Stroke,
- Displacement: 42.7 cc
- Rated Power : 1.2 Kw / 7500 rpm
- Max. Torque: 1.8 N.m / 5500 rpm
- Cylinder: Aliuminium
- Bore× Stroke: 40x34 mm
- Fuel Tank Capacity: 1 L
- Compression Ratio: 7.5 : 1
- Start Type: Pull
- Certical: EUII
- PTO Shaft Rotation: Counterclockwise (From PTO shaft side)
- Carburetor: Buttery
- Lubrication System: Splash
- Governor System: Centrifugal Mass Type
- Air Cleaner: Dual Element
- Dimensions(L×W×H): 260x255.4x177.5 mm
- Dry Weight: 4 KG

Torque Tachometer



Features

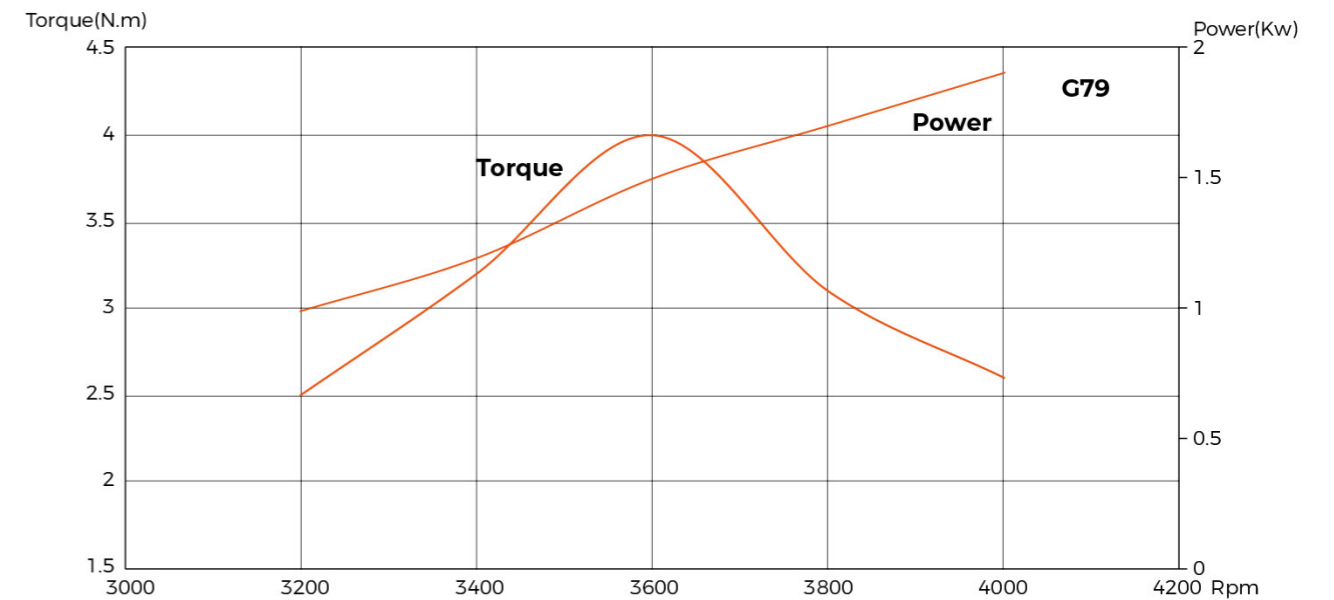
- High fuel efficiency and high output operation
- Smooth performance
- Especially quiet
- Reliable
- Easy to use and maintain
- Easy starting
- Emission compliant
- Available options

Technical Data

- Model name: G79
- Engine Type: Single Cylinder,Air-cooled, 4-Stroke, OHV
- Displacement: 79 cc
- Rated Power: 1.5 Kw / 3600 rpm
- Max. Torque: 4 N.m / 3600 rpm
- Cylinder: Aliuminium
- Bore× Stroke: 52x38 mm
- Fuel Tank Capacity: 1.8 L
- Oil Capicity: 350 mL
- Compression Ratio: 8.0 : 1
- Start Type: Pull
- Certical: EUV
- PTO Shaft Rotation: Counterclockwise (From PTO shaft side)
- Carburetor: Buttery
- Lubrication System: Splash
- Governor System: Centrifugal Mass Type
- Air Cleaner: Dual Element
- Dimensions(L×W×H): 318.6x246.8x294.6 mm
- Dry Weight: 10.5 KG



Torque Tachometer





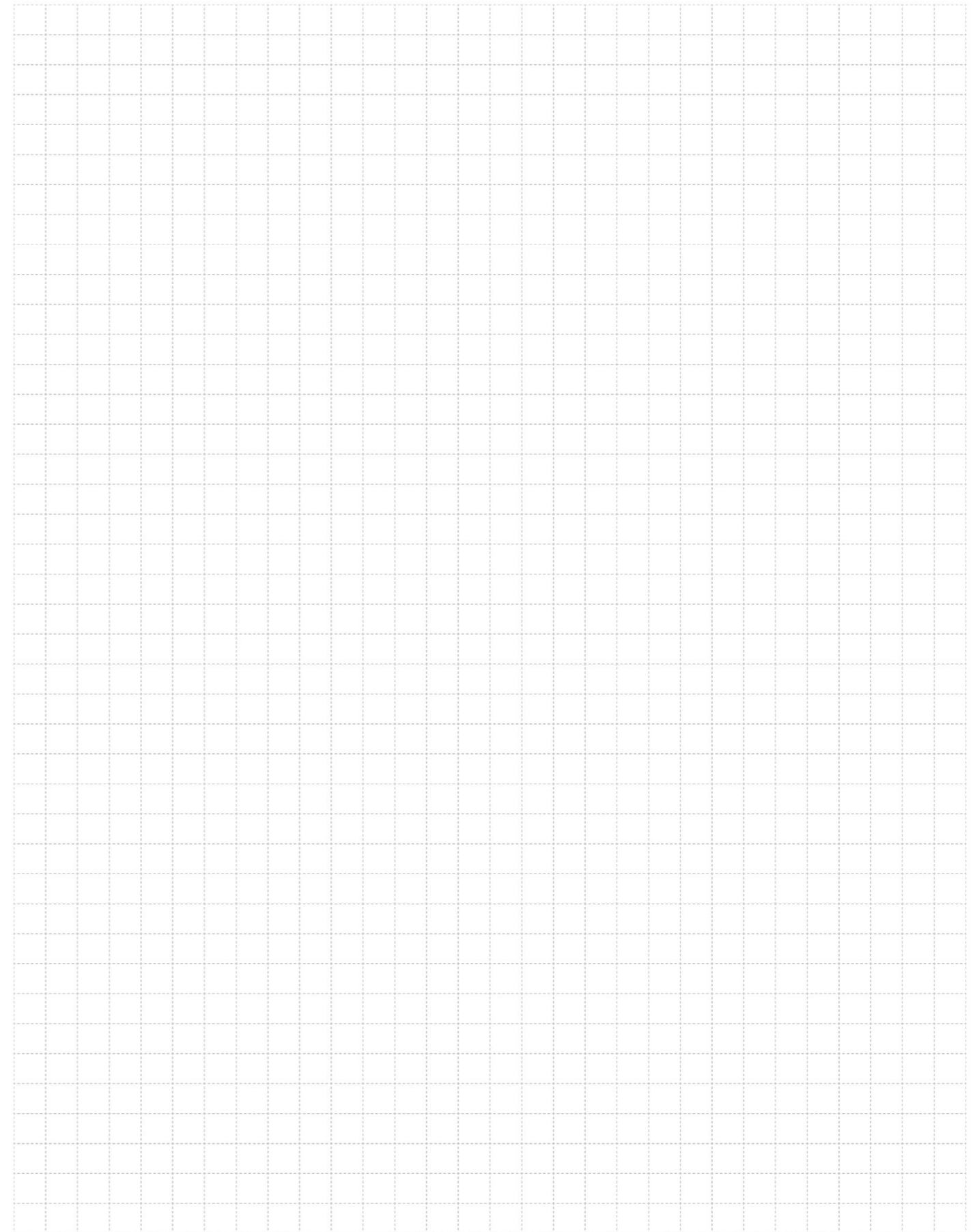
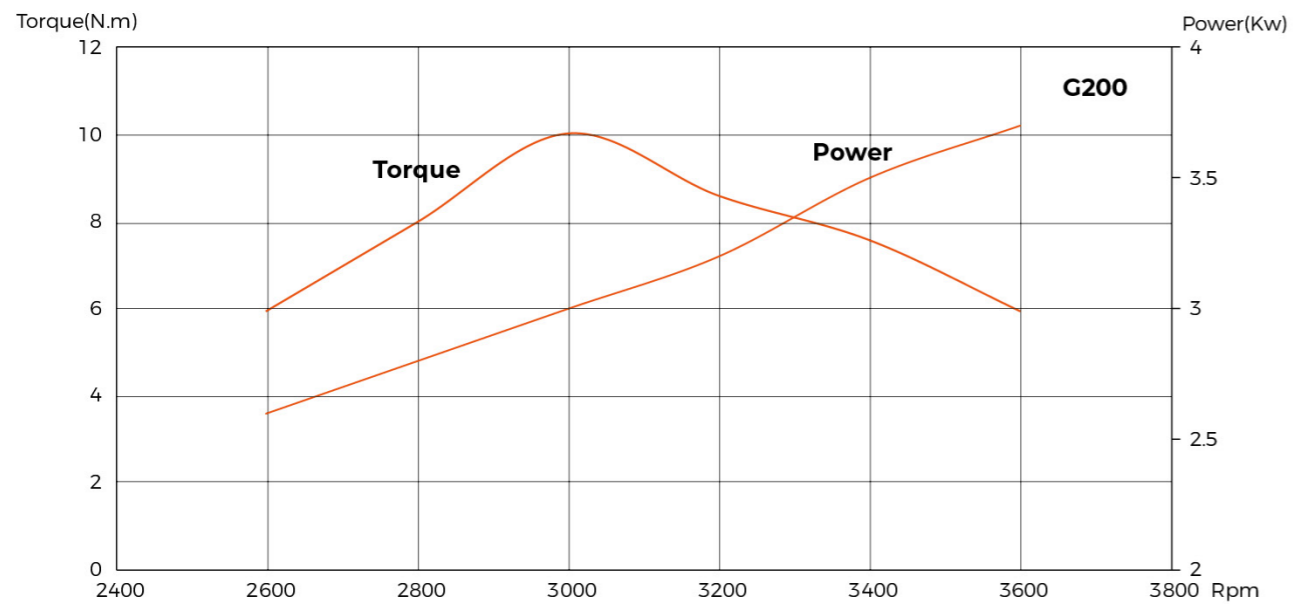
Features

- High fuel efficiency and high output operation
- Smooth performance
- Especially quiet
- Reliable
- Easy to use and maintain
- Easy starting
- Emission compliant
- Available options

Technical Data

- Model name: G200
- Engine Type: Single Cylinder, Air-cooled, 4-Stroke, OHV
- Displacement: 196 cc
- Rated Power: 3.7 Kw / 3600 rpm
- Max. Torque: 11.5 N.m / 2800 rpm
- Cylinder: Aluminium
- Bore x Stroke: 68x54 mm
- Fuel Tank Capacity: 2.8 L, 3.1 L
- Oil Capacity: 0.55 L
- Compression Ratio: 8.5 : 1
- Start Type: Pull
- Certical: EUII, EUV
- PTO Shaft Rotation: Counterclockwise (From PTO shaft side)
- Carburetor: Buttery
- Lubrication System: Splash
- Governor System: Centrifugal Mass Type
- Air Cleaner: Dual Element
- Dimensions(LxWxH): 355x310x337 mm
- Dry Weight: 16.5 KG

Torque Tachometer



PUMP RANGE

Peripheral Pump



Self-Priming Peripheral Pump



Jet Pump



Jet Pump for Deep Wells



Centrifugal Pump



Multistage Centrifugal Pump



Horizontal Multistage Centrifugal Pump



Permanent Magnet Intelligent Booster



Self-Priming Centrifugal Pump



Submersible Pump



Domestic Lifting Station



Pool Pump



Garden Jei Pump



Garden Pressure System



Fountain Pump



Garden Submersible Pump



Petrol Lawnmowers



Wall-Mounted Gas Boiler Pump



Circulation Pump



Booster Pump



Stainless Steel Centrifugal Pump



Semi-open Impeller Stainless Steel Centrifugal Pump



Stainless Steel Horizontal Multistage Pump



Intelligent Pressure Booster System



Vertical Multistage Pump



Pressure Booster System



Stainless Steel Standard Centrifugal Pump



Standard Centrifugal Pump



End Suction Centrifugal Pump



Vertical In-line Pump



PUMP RANGE

Submersible Sewage Pump



Submersible Dewatering Pump



Submersible Slurry Pump



Gasoline/Diesel Water Pump



Generators



Submersible Borehole Pump 2", 2.5", 3", 4", 5", 6"



Solar Pumping System

